

The wooden supports must be positioned referring to Fig. 4–19.

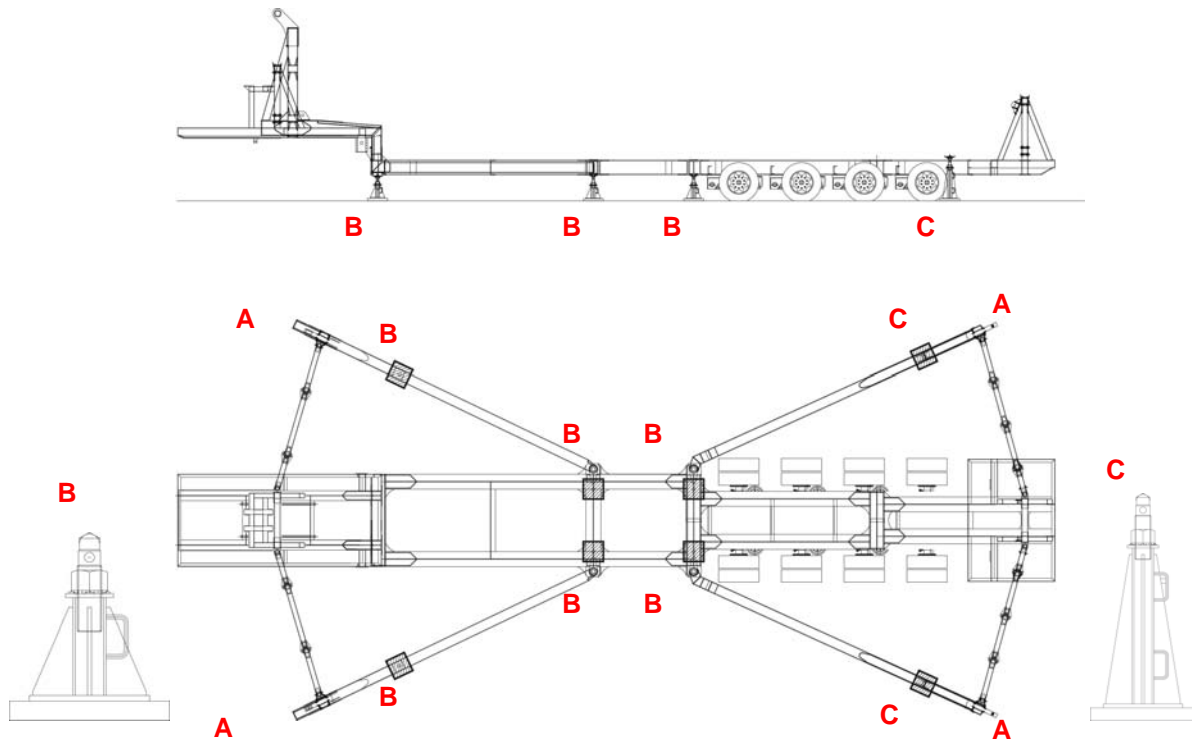


Fig. 4-19 Support plate - 1

Referring to Fig. 4–19

Support point	Allowable load in kg	Total supports number
A	25,000	4
B	3,500	6
C	3,500	2

Tab. 4-1 Support plate

The dimensions of the supports vary with the allowable pressure on the ground. It is necessary to check the effective load-bearing capacity of the ground on which the ride is going to be installed.

Below are some typical data of allowable pressure on the ground and of the supports that can be used.